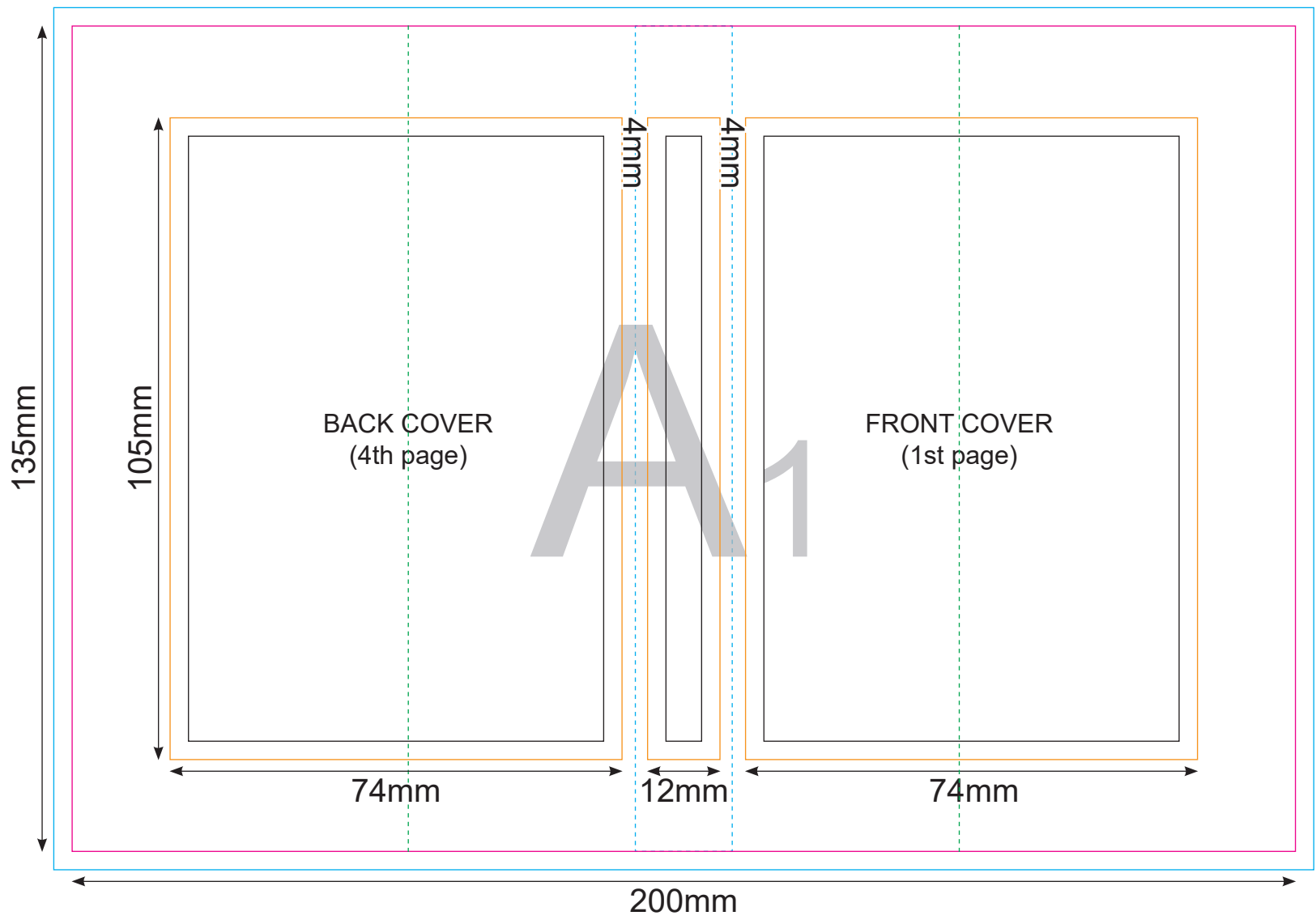
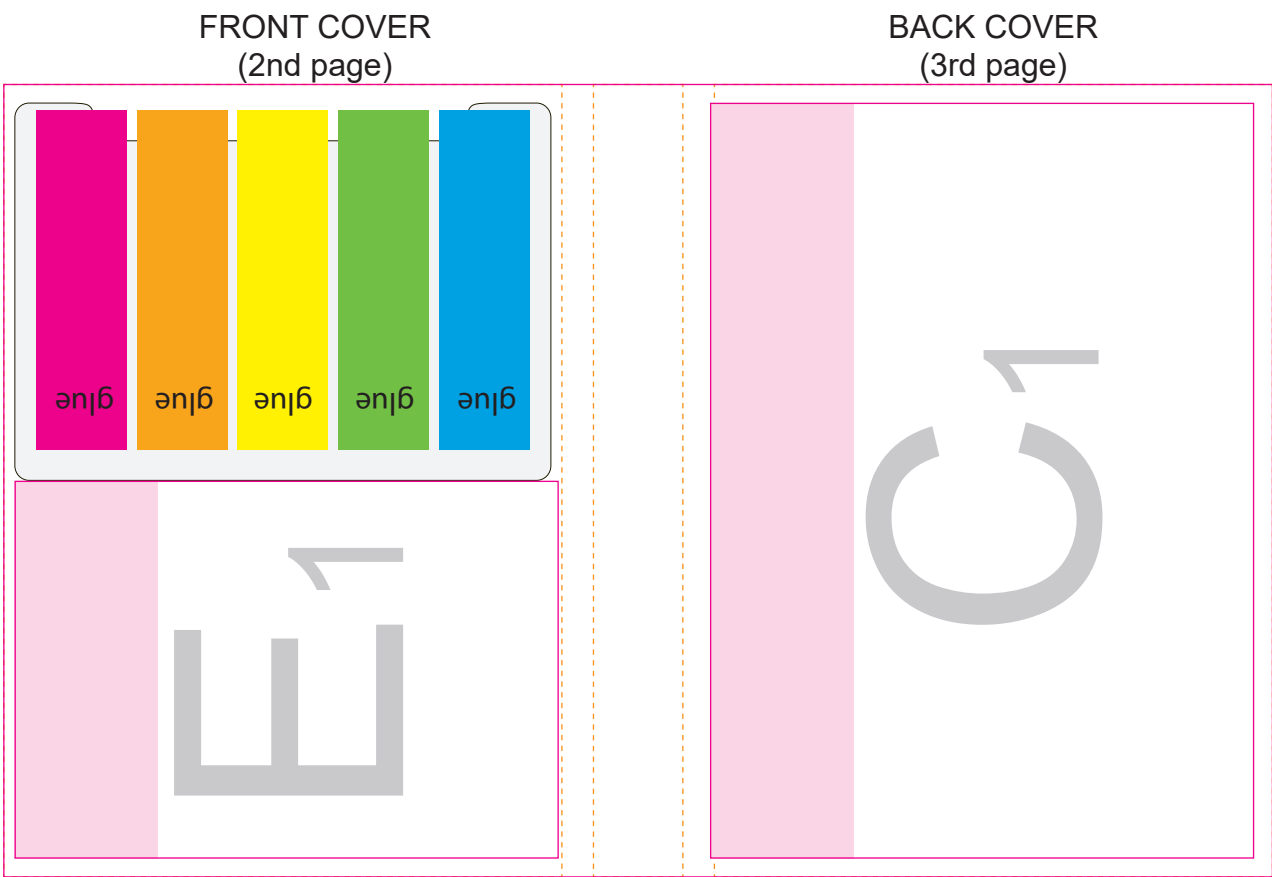




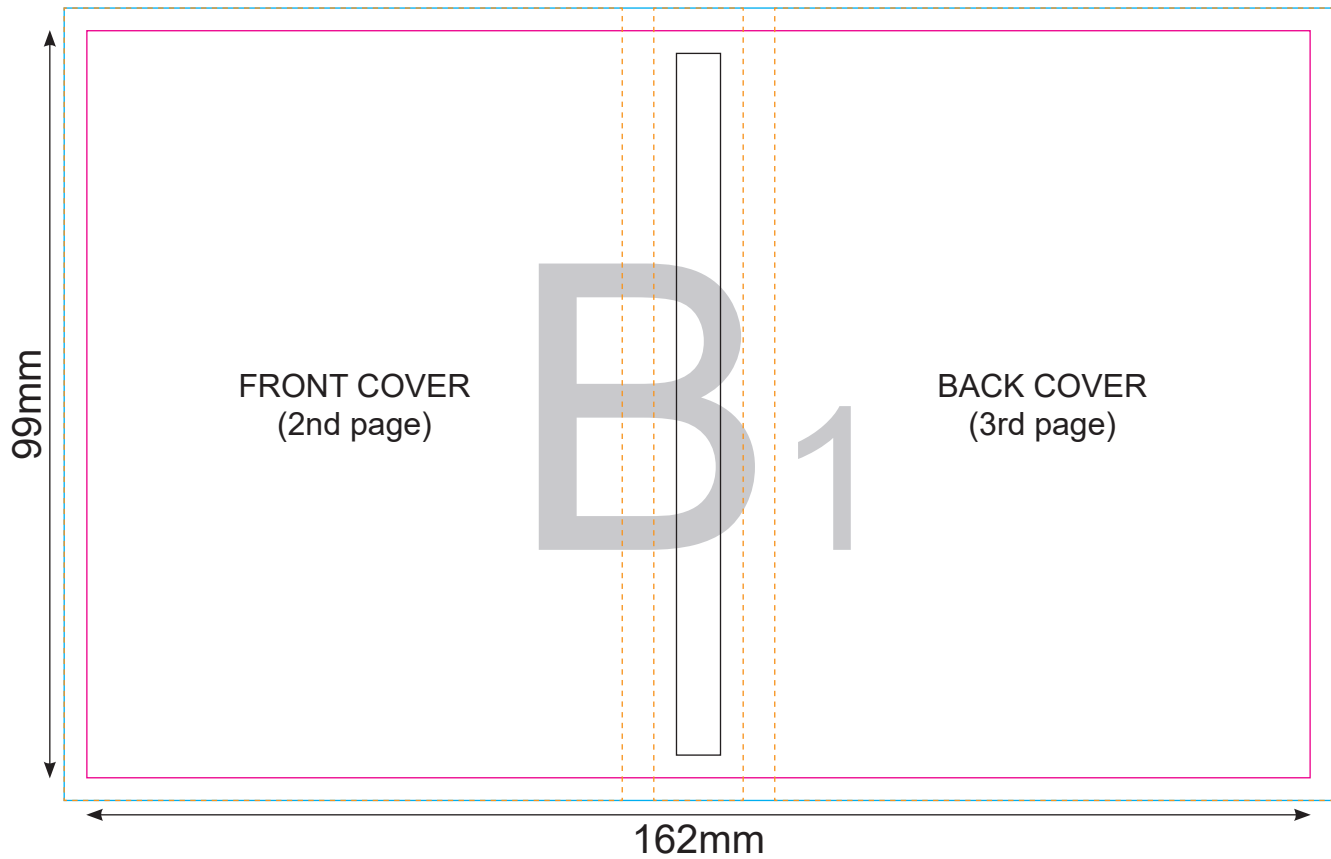
OUTER COVER



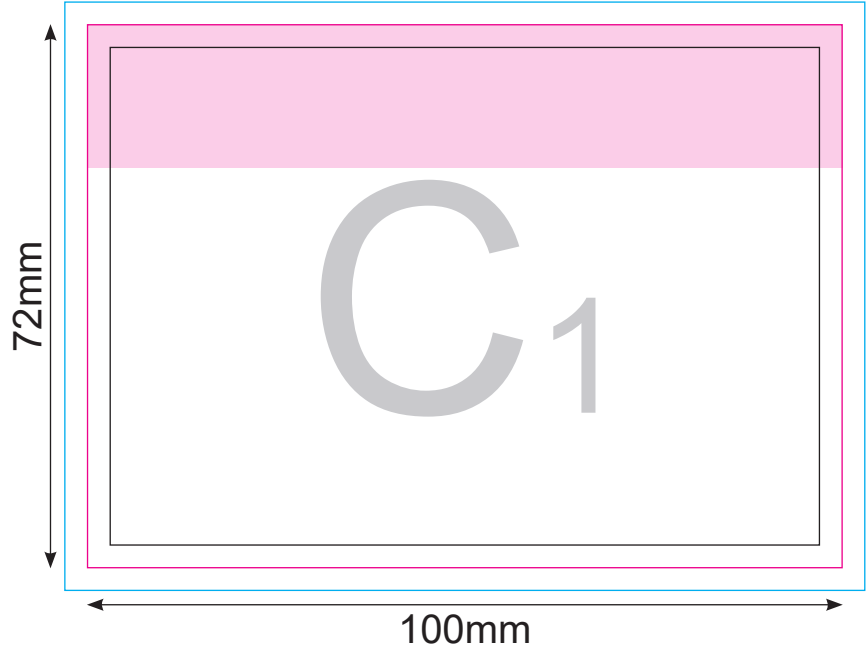
SKETCH OF COMPONENT PLACEMENT - B1



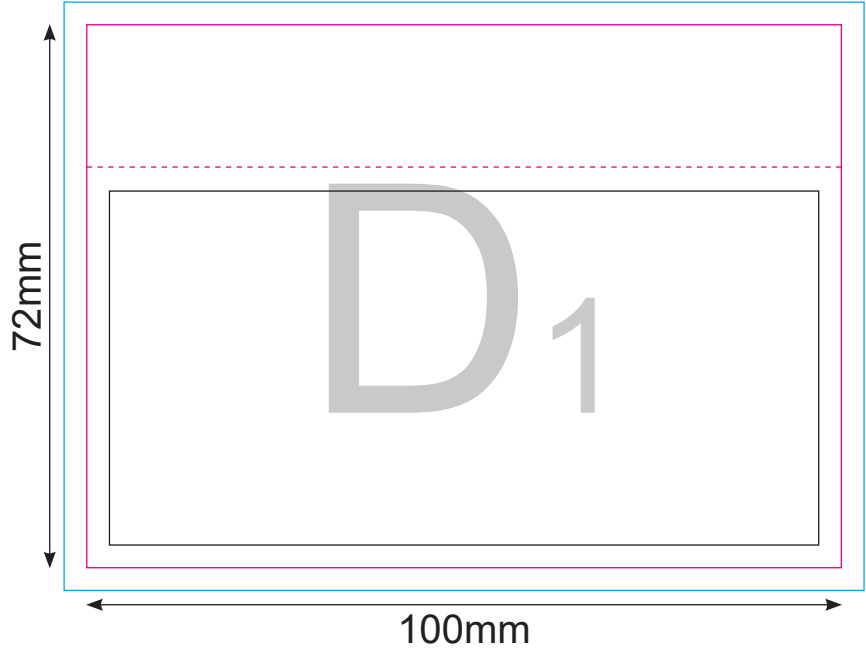
INNER COVER



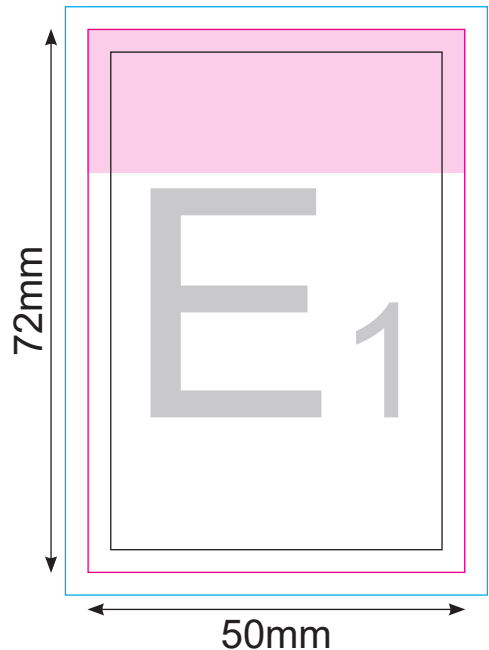
STICKY NOTES



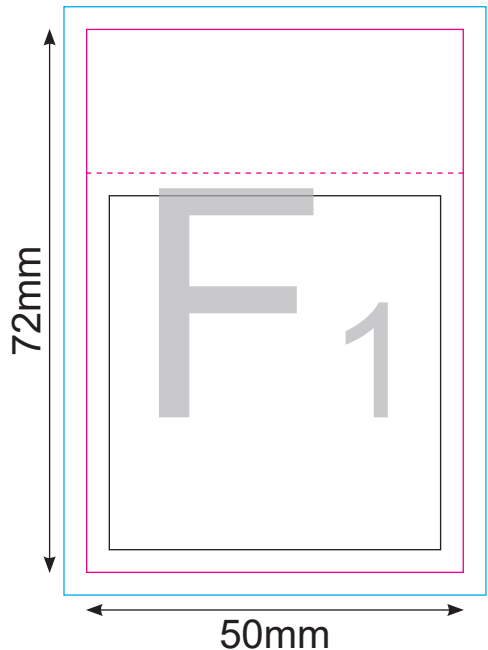
BOTTOM SHEET



STICKY NOTES



BOTTOM SHEET



Important:

Please use this page as preview/position guide.  
Please do NOT place your materials on this page.  
Please use next pages (2-7) for print ready files ONLY:

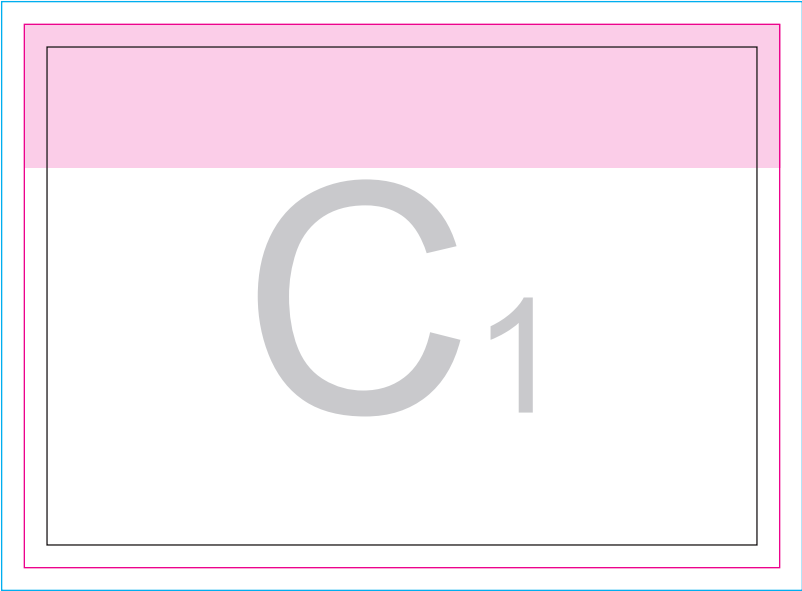
- page 2 - outer cover (A1)
- page 3 - inner cover (B1)
- page 4 - sticky notes (C1)
- page 5 - bottom sheet (D1)
- page 6 - sticky notes (E1)
- page 7 - bottom sheet (F1)

Key:

- Finished component size
- Bleed area. In case of bleed imprint, please extend it until blue line
- Safe print area. Keep all important text and graphics within this area
- Solid Board
- Edge of Solid Board
- Visual Spine Edge
- Axis of the Product
- Edge of Glue
- Glue

A1

B1



A diagram showing a container labeled  $C_1$ . The container is represented by a large rectangle with a black border. Inside this rectangle, there is a horizontal pink bar at the top, representing a header. The remaining area below the header is light gray, representing the body of the container. The label  $C_1$  is centered in the gray area.

$C_1$



The diagram illustrates a document structure with nested rectangles. An outer blue rectangle contains a magenta rectangle. Inside the magenta rectangle is a white rectangle with a black border. A horizontal dashed magenta line is positioned above the white rectangle. The text "D<sub>1</sub>" is centered within the white rectangle.

D<sub>1</sub>



E1

F 1