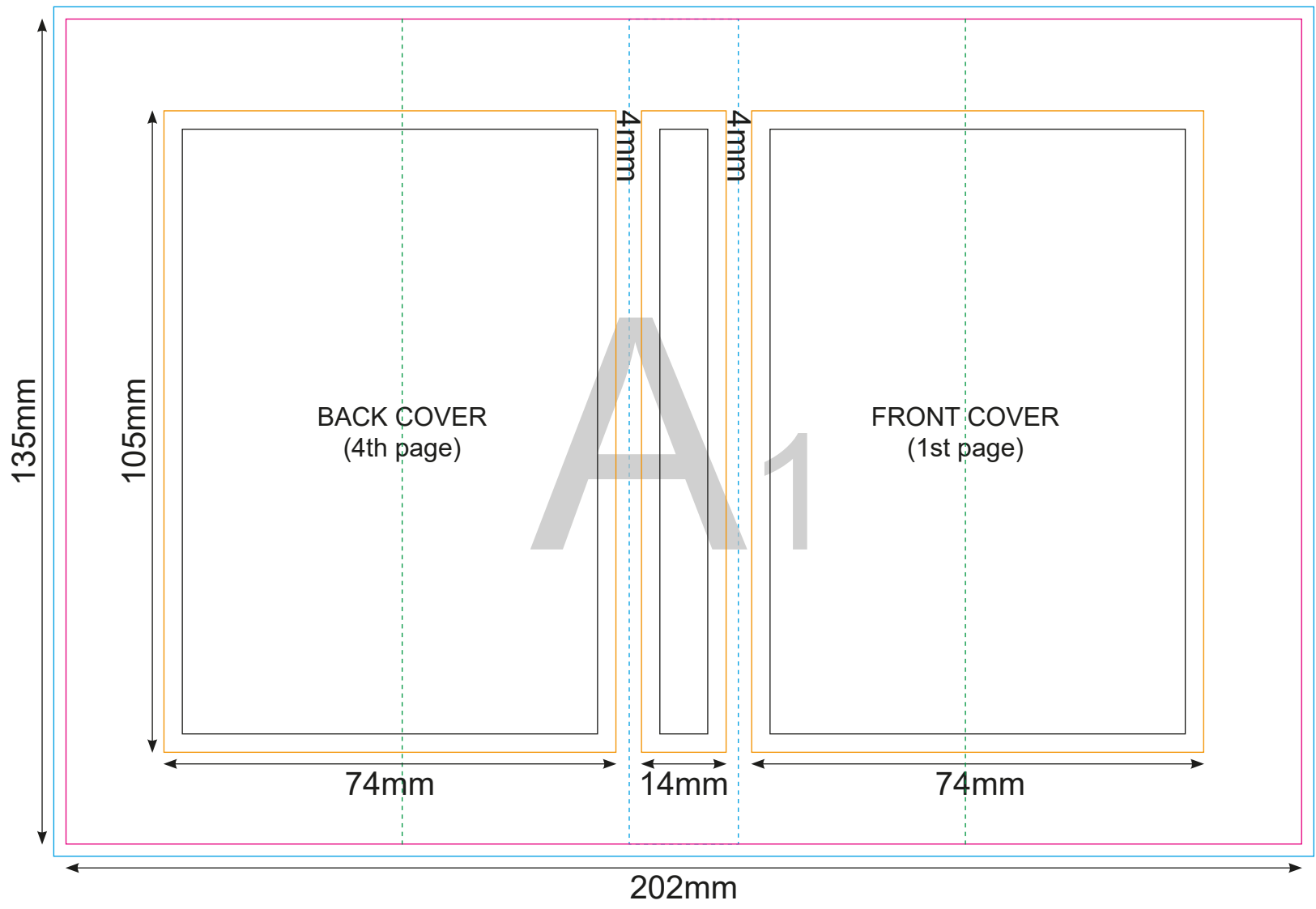
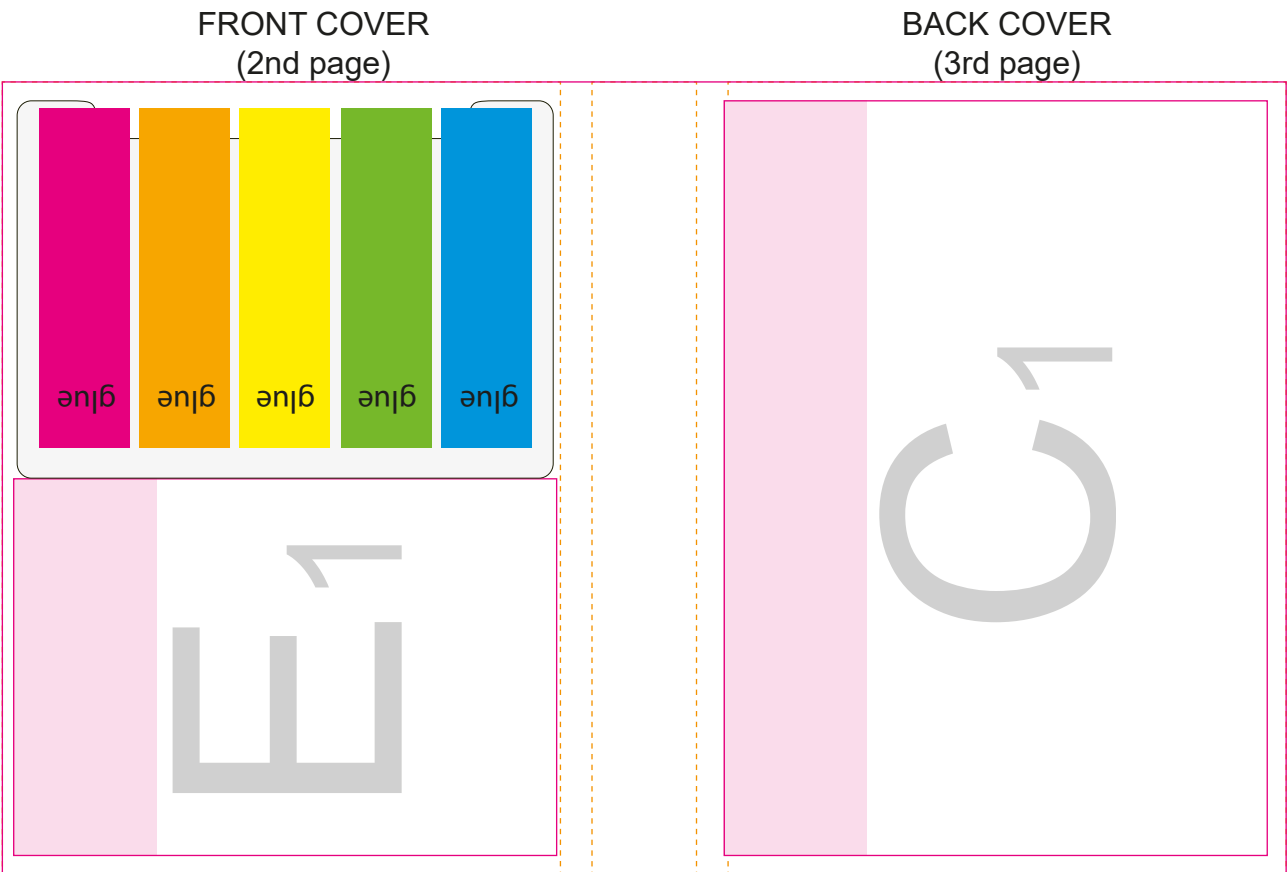


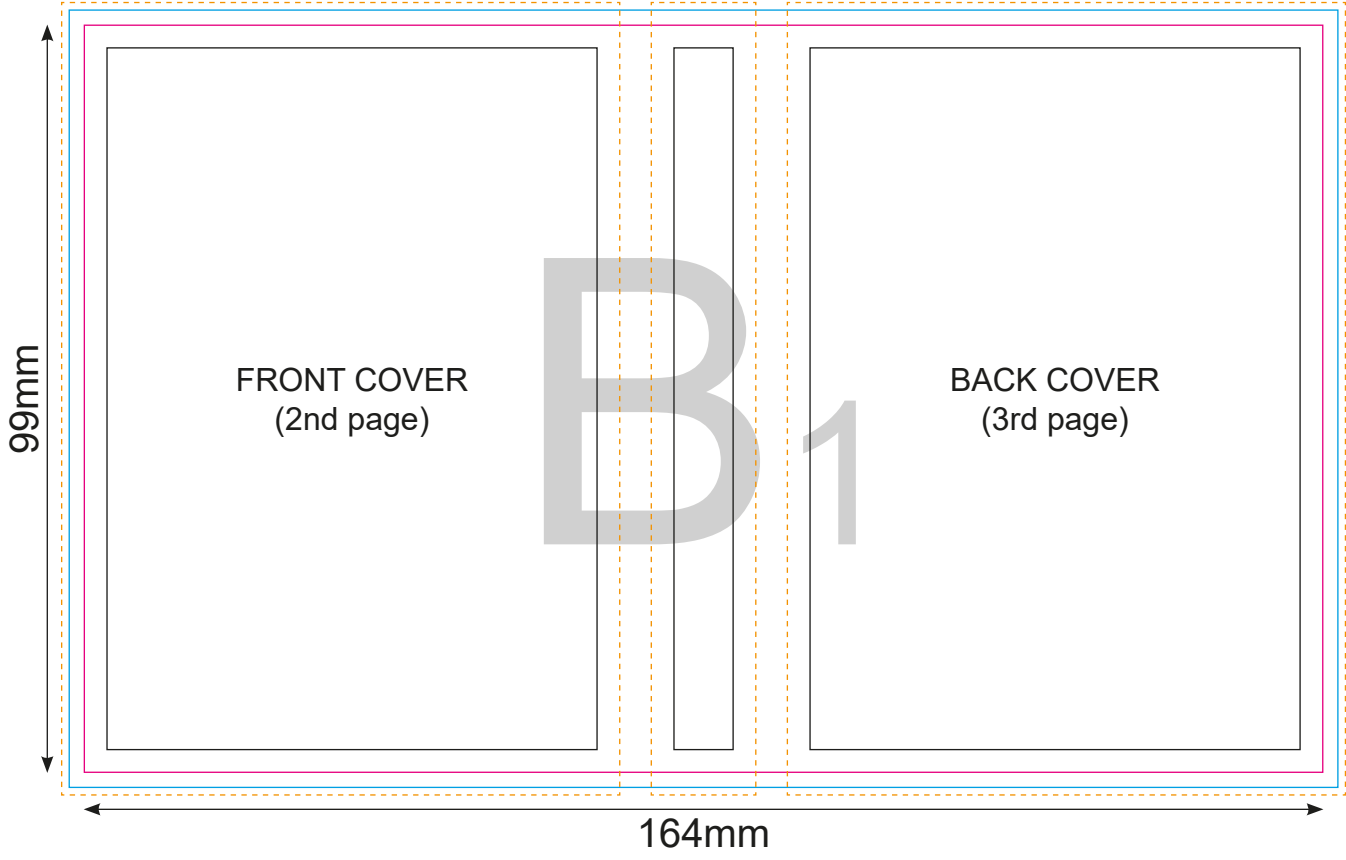
OUTER COVER



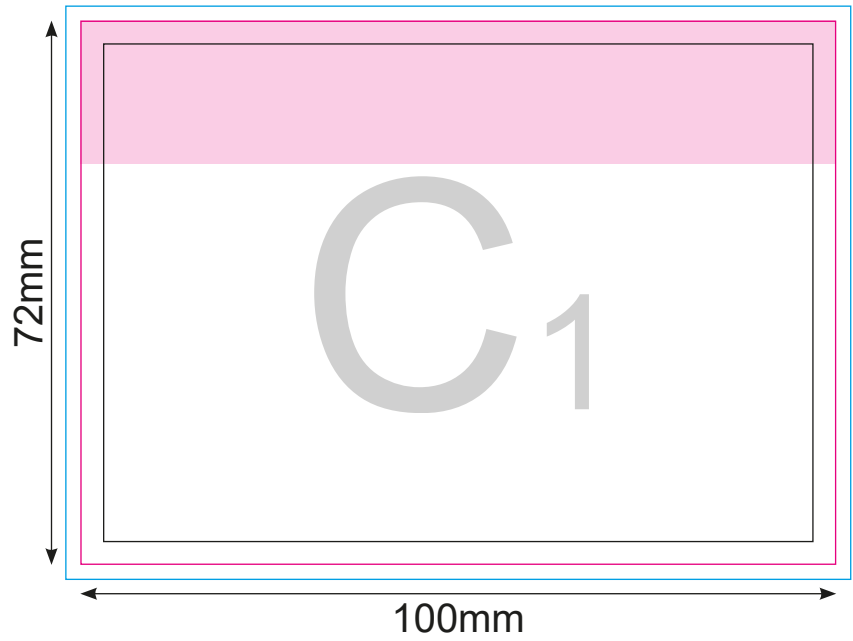
SKETCH OF COMPONENT PLACEMENT



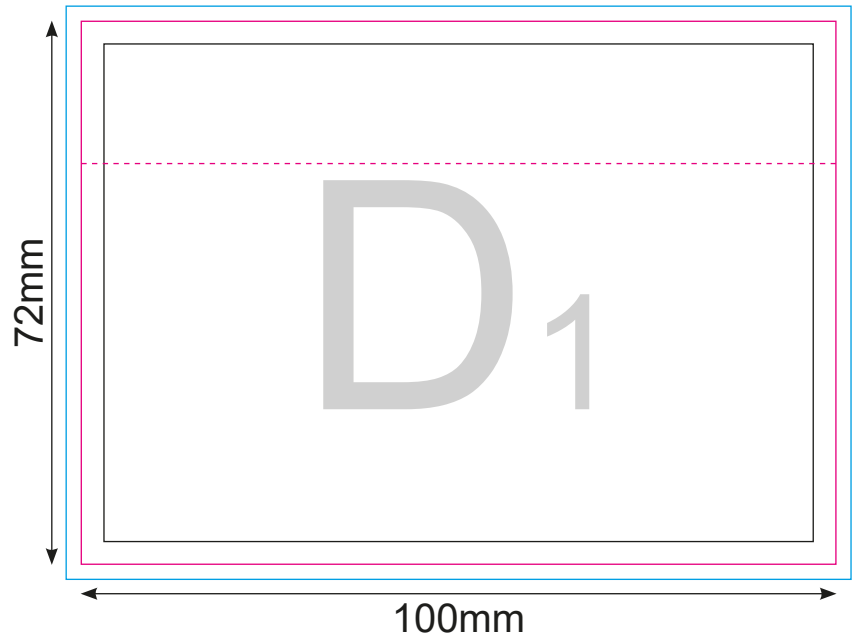
INNER COVER



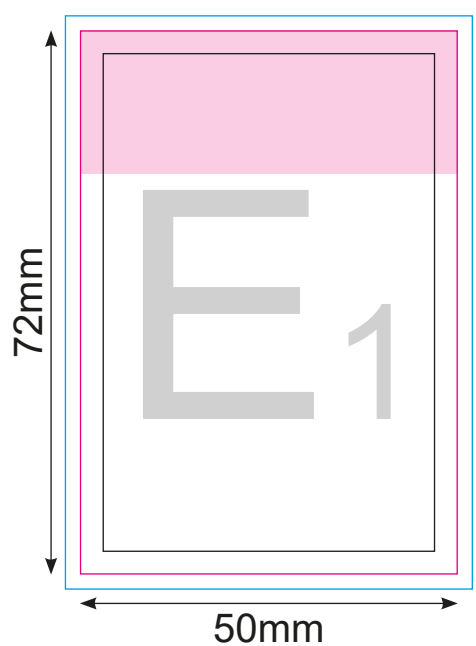
STICKY NOTES



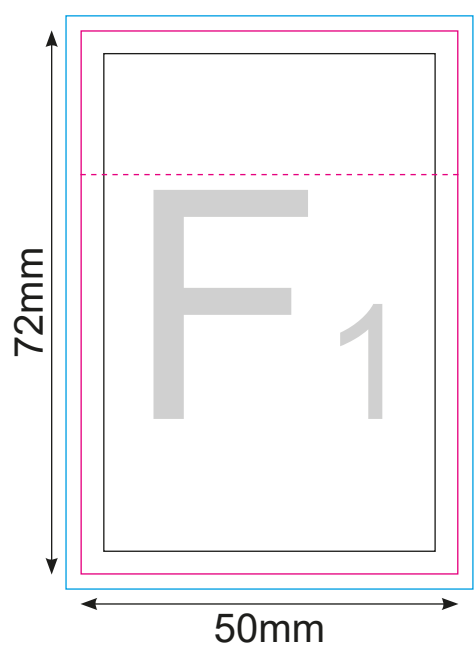
BOTTOM SHEET



STICKY NOTES



BOTTOM SHEET



Important:

Please use this page as preview/position guide.
Please do NOT place your materials on this page.
Please use next pages (2-7) for print ready files ONLY:


- page 2 - outer cover (A1)
- page 3 - inner cover (B1)
- page 4 - sticky notes (C1)
- page 5 - bottom sheet (D1)
- page 6 - sticky notes (E1)
- page 7 - bottom sheet (F1)

Key:

- Finished component size
- Bleed area. In case of bleed imprint, please extend it until blue line
- Safe print area. Keep all important text and graphics within this area
- Solid Board
- Edge of Solid Board
- Visual Spine Edge
- Axis of the Product
- Edge of Glue
- Glue

A1

B1



The diagram shows a rectangular frame with a blue border. Inside this frame is a pink rectangular header at the top. Below the header is a light gray rectangular area. The text 'C₁' is centered in the gray area.

C₁



A diagram consisting of a light gray rectangular area enclosed by a black border. This is further enclosed by a magenta border, which is then enclosed by a blue border. A horizontal dashed magenta line runs across the upper portion of the gray area. The text "D1" is centered in the gray area, with the "D" being significantly larger than the "1".

D1

E1

F₁