

Important:

Please use this page as preview/position guide.
 Please do NOT place your materials on this page.
 Please use next pages (2-10) for print ready files ONLY:

- page 2 - outer cover (A1)
- page 3 - inner cover (A2)
- page 4 - paper markers (B1)
- page 5 - bottom sheet (C1)
- page 6 - paper markers (D1)
- page 7 - bottom sheet (E1)
- page 8 - paper markers (F1)
- page 9 - bottom sheet (G1)
- page 10 - paper markers (H1)
- page 11 - bottom sheet (I1)

Key:

Finished component size

Bleed area. In case of bleed imprint, please extend it until blue line

Safe print area. Keep all important text and graphics within this area

Axis of the Crease

Edge of Glue

Glue

A₁

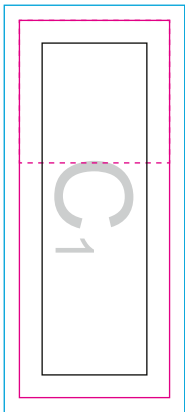


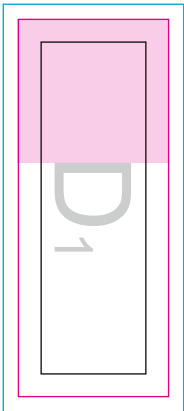
A2

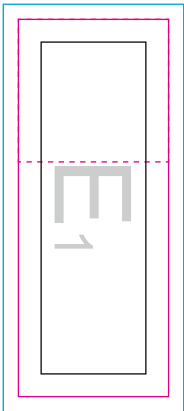
The image shows a template for A2 paper. It features a large, light gray watermark 'A2' centered on the page. The page is framed by a blue border. Inside this, there is a pink border. Within the pink border, there are two large, empty rectangular frames, one at the top and one at the bottom, separated by a horizontal line. The watermark 'A2' is positioned such that it overlaps the horizontal line between the two frames.

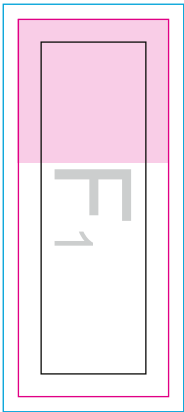


B₁









G
1

